

RYS352A Field Test



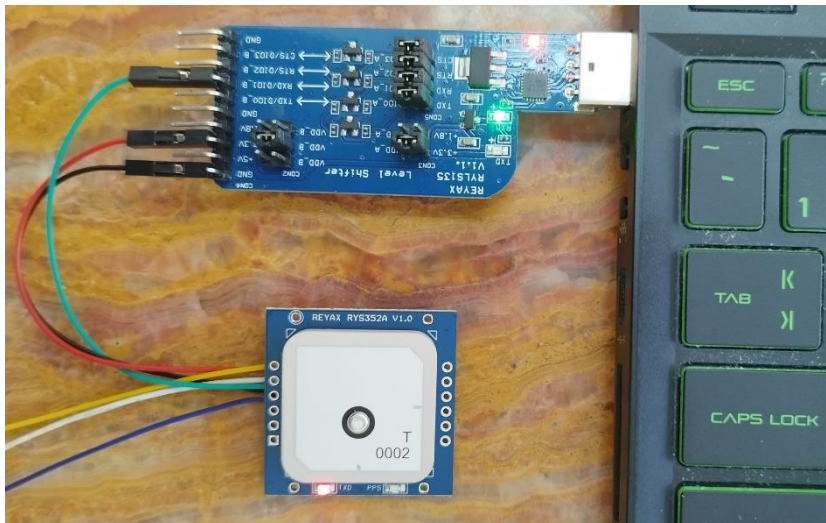
Test hardware & software requirements

1. REYAX RYS352A GNSS Antenna module x 1
2. Molex® 53261-0671 6 pin Wire x 1
3. REYAX RYLS135 USB to UART bridge x 1
4. Windows computer x 1
5. VisualGPSView ® Free download

<https://www.visualgps.net/#visualgpsview-content>

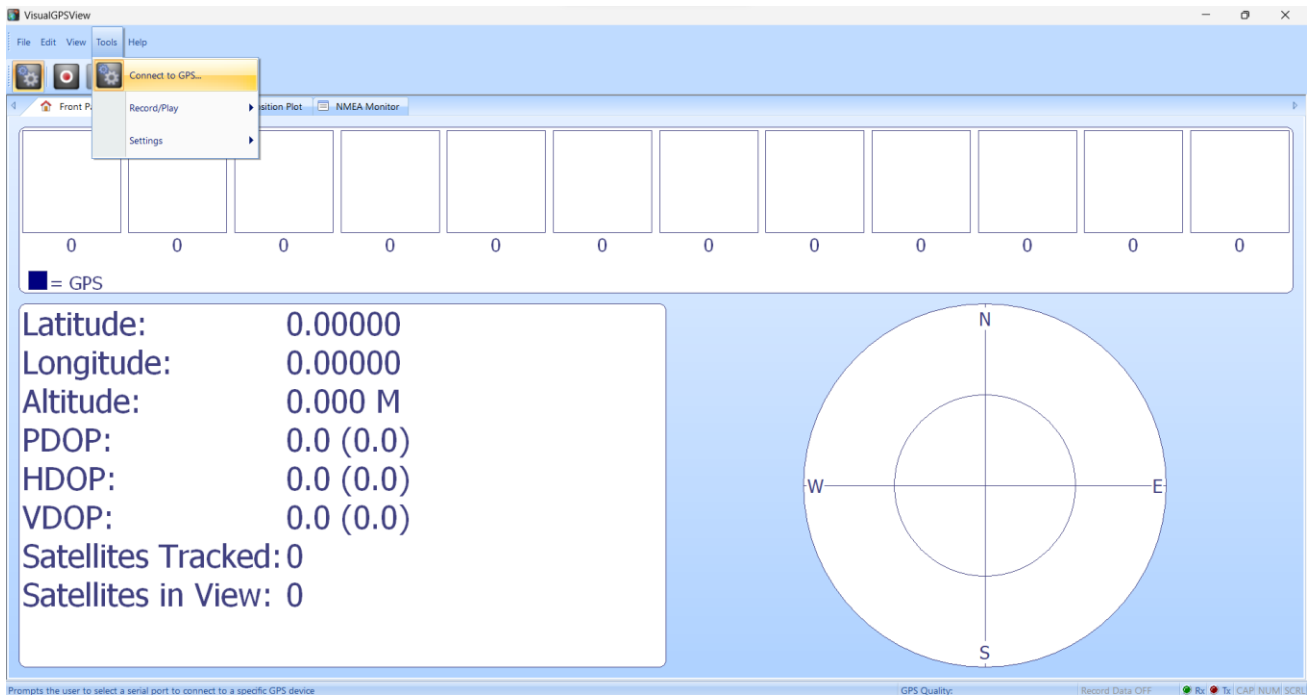
Test process

1. Connect RYS352A to RYLS135 via wire then plug it into the Windows computer USB port.

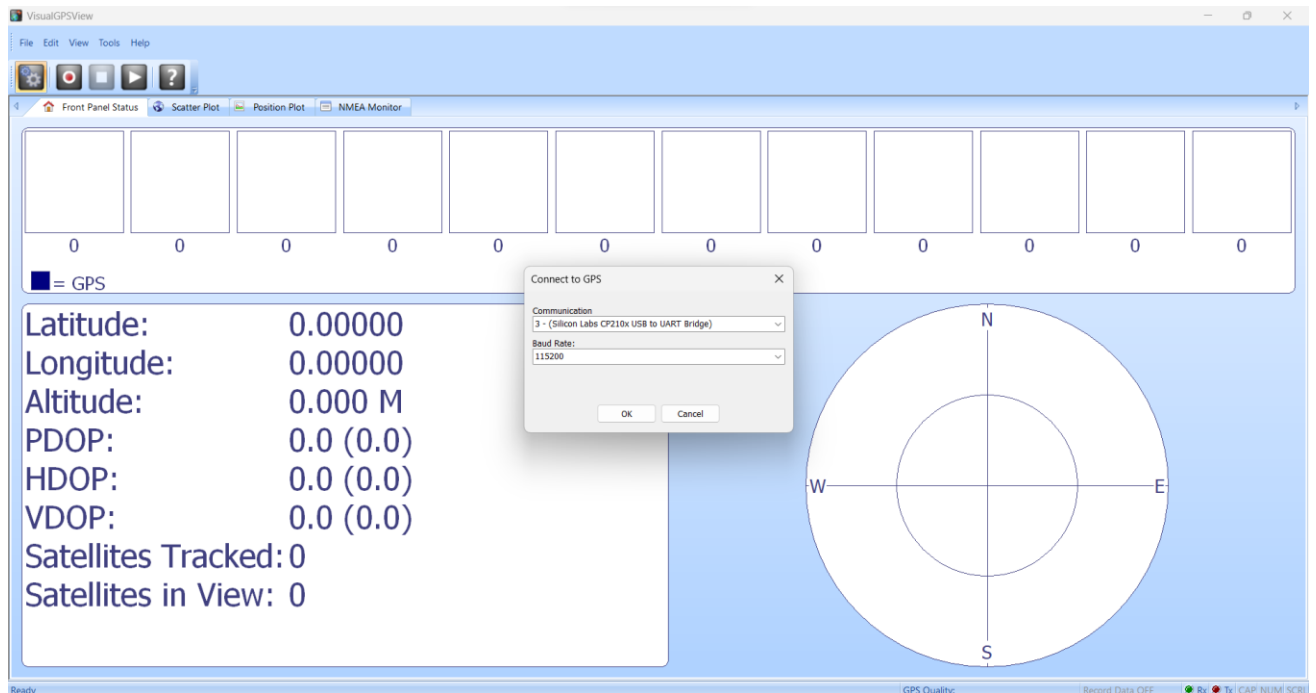


2. Download and install the VisualGPSView software.

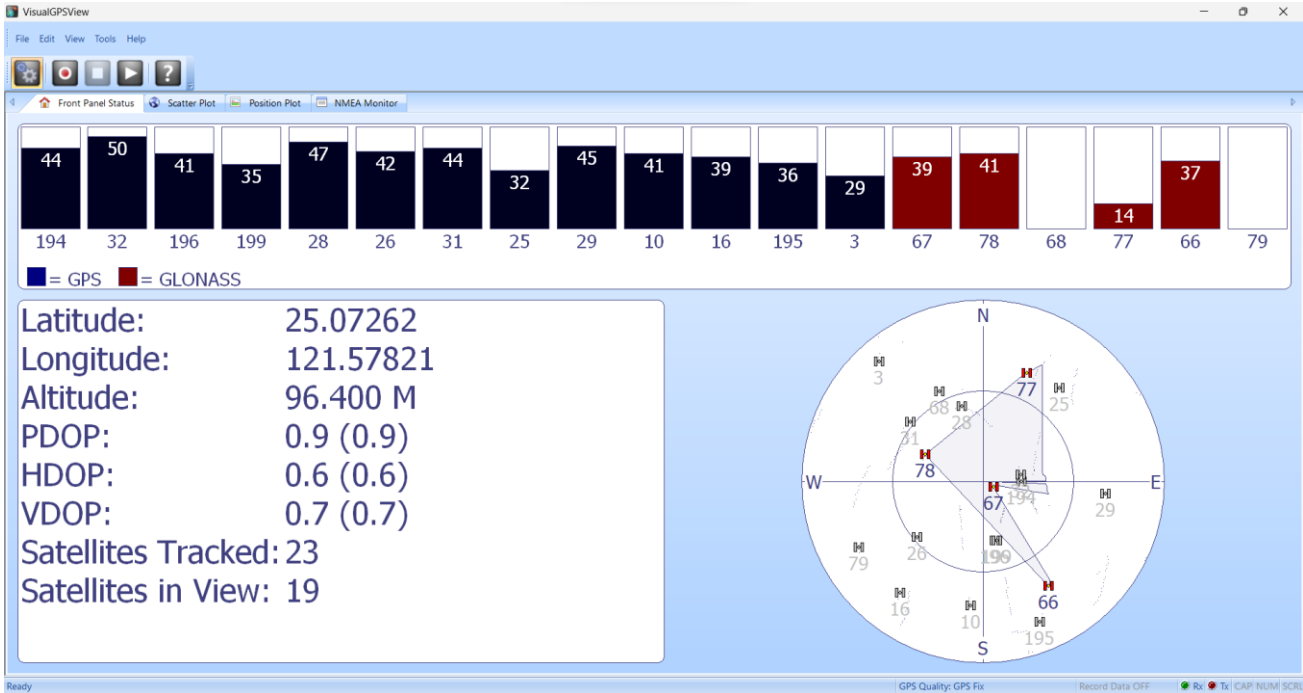
3. Execute VisualGPSView software then select "Connect to GPS" .



4. Select the Com port and baud rate.



Test Result



E-mail: sales@reyax.com
Website: <http://reyax.com>